

HORIZONTAL REFERENCE - NAD 83, DELAWARE STATE PLANE, ZONE 0700, U.S. FOOT.

VERTICAL REFERENCE - MEAN LOWER LOW WATER, WHICH IS 2.63' BELOW N.A.V.D. 88.

GEOD 12B AND NOAA TIDAL EPOCH: 1983 - 2001 WERE USED. SOUNDINGS ARE EXPRESSED IN FEET AND TENTHS AND REFER TO MEAN LOWER LOW WATER.

SOUNDINGS WERE SELECTED FOR PLOTTING PURPOSES ONLY, USING THE MINIMUM DEPTH WITHIN A 30'X30' CELL SHIFTED TO THE CELL CENTER.

CONTOURS DEPICT ACTUAL LOCATION OF BATHYMETRY AND DO NOT NECESSARILY REFLECT PLOTTED SOUNDING LOCATIONS.

CONTOURS WERE GENERATED USING THE MINIMUM DEPTH WITHIN A 3'X3' CELL.

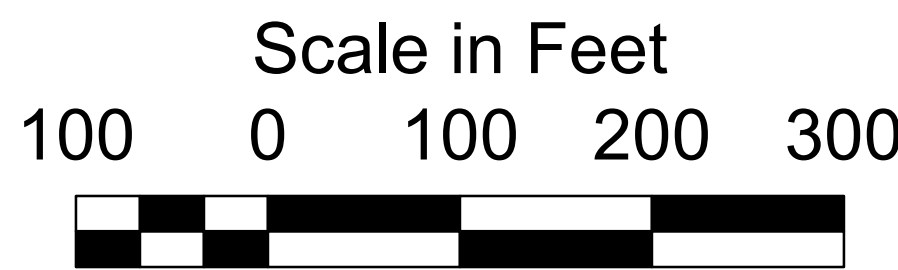
THE INFORMATION DEPICTED ON THIS MAP REPRESENT THE RESULTS OF SURVEYS MADE ON THE DATES INDICATED AND CAN ONLY BE CONSIDERED AS INDICATING THE GENERAL CONDITIONS EXISTING AT THAT TIME.

THE POSITIONS OF THE AIDS TO NAVIGATION ARE PROVIDED FOR INFORMATION ONLY, AND SHOULD NOT BE USED FOR NAVIGATION.

THE LIMITS OF THE FEDERAL CHANNEL DEPICT THE MOST CURRENT CHANNEL FRAMEWORK AVAILABLE WHICH CAN ALSO BE DOWNLOADED HERE:

<http://navigation.usace.army.mil/Survey/Framework>

BASE MAPPING LINEWORK OR ORTHOPHOTOGRAPHY HAS BEEN COMPILED FROM A VARIETY OF SOURCES AND DATES AND IS INTENDED TO PORTRAY GENERAL CHARACTERISTICS OF THE SHORELINE AND OTHER FEATURES. TEMPORAL CHANGES MAY HAVE OCCURRED SINCE THIS DATA SET WAS COLLECTED AND SOME PARTS OF THE DATA MAY NO LONGER BE AN ACCURATE REPRESENTATION OF THE SURFACE CONDITIONS.



- Shoalest Sounding
- 10' Curve of Depth
- CenterLine
- ToeLine
- StationLine



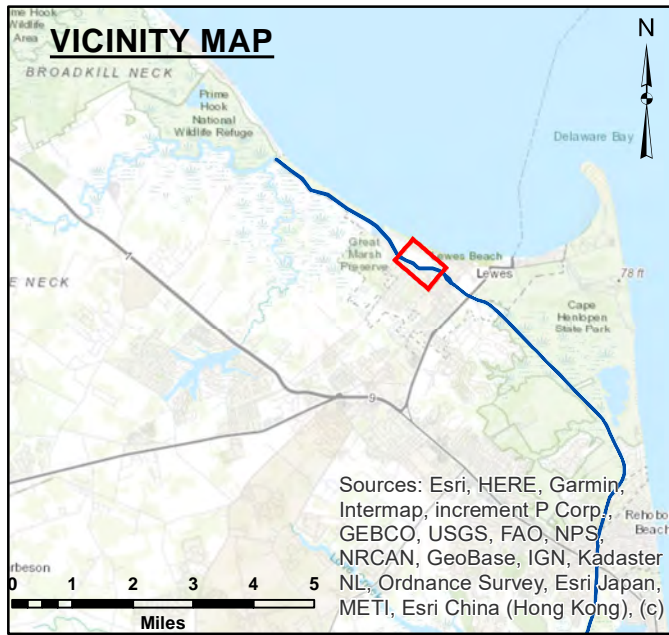
STA. 10+484 to STA. 19+586 -- 27, 28 & 29 FEB 24

The information provided is for informational purposes only. It is not intended to be used for navigation. The information is provided as a service to the public and is not a guarantee of accuracy. The information is provided as a service to the public and is not a guarantee of accuracy. The information is provided as a service to the public and is not a guarantee of accuracy.

U.S. ARMY CORPS OF ENGINEERS  
PHILADELPHIA DISTRICT  
Drawing No. \_\_\_\_\_  
Project No. \_\_\_\_\_  
Scale \_\_\_\_\_  
Author \_\_\_\_\_  
Checked By \_\_\_\_\_  
Approved \_\_\_\_\_

INLAND WATERWAY  
ROOSEVELT INLET TO SAVANNAH ROAD BRIDGE  
LEWES AND REHOBOTH CANAL, DELAWARE  
E-LR-06





HORIZONTAL REFERENCE - NAD 83, DELAWARE STATE PLANE, ZONE 0700, U. S. FOOT.

VERTICAL REFERENCE - MEAN LOWER LOW WATER, WHICH IS 2.63' BELOW N.A.V.D. 88.

GEOD 12B AND NOAA TIDAL EPOCH: 1983 - 2001 WERE USED. SOUNDINGS ARE EXPRESSED IN FEET AND TENTHS AND REFER TO MEAN LOWER LOW WATER.

SOUNDINGS WERE SELECTED FOR PLOTTING PURPOSES ONLY, USING THE MINIMUM DEPTH WITHIN A 30'X30' CELL SHIFTED TO THE CELL CENTER.

CONTOURS DEPICT ACTUAL LOCATION OF BATHYMETRY AND DO NOT NECESSARILY REFLECT PLOTTED SOUNDING LOCATIONS.

CONTOURS WERE GENERATED USING THE MINIMUM DEPTH WITHIN A 3'X3' CELL.

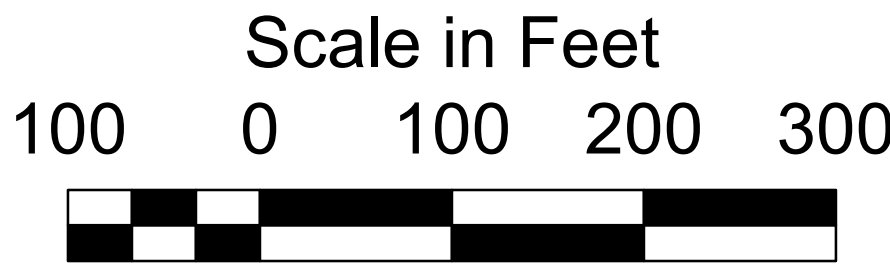
THE INFORMATION DEPICTED ON THIS MAP REPRESENT THE RESULTS OF SURVEYS MADE ON THE DATES INDICATED AND CAN ONLY BE CONSIDERED AS INDICATING THE GENERAL CONDITIONS EXISTING AT THAT TIME.

THE POSITIONS OF THE AIDS TO NAVIGATION ARE PROVIDED FOR INFORMATION ONLY, AND SHOULD NOT BE USED FOR NAVIGATION.

THE LIMITS OF THE FEDERAL CHANNEL DEPICT THE MOST CURRENT CHANNEL FRAMEWORK AVAILABLE WHICH CAN ALSO BE DOWNLOADED HERE:

<http://navigation.usace.army.mil/Survey/Framework>

BASE MAPPING LINEWORK OR ORTHOPHOTOGRAPHY HAS BEEN COMPILED FROM A VARIETY OF SOURCES AND DATES AND IS INTENDED TO PORTRAY GENERAL CHARACTERISTICS OF THE SHORELINE AND OTHER FEATURES. TEMPORAL CHANGES MAY HAVE OCCURRED SINCE THIS DATA SET WAS COLLECTED AND SOME PARTS OF THE DATA MAY NO LONGER BE AN ACCURATE REPRESENTATION OF THE SURFACE CONDITIONS.



- Shoalest Sounding
- 10' Curve of Depth
- CenterLine
- ToeLine
- StationLine



STA. 10+484 to STA. 19+586 -- 27, 28 & 29 FEB 24

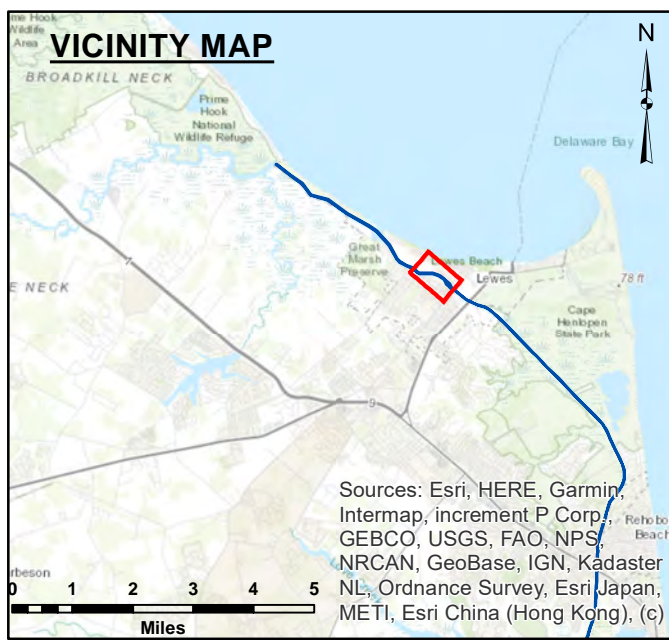
The information is provided "as is". The government does not warrant the accuracy, completeness, or reliability of the information. The government disclaims any liability for the use of this information for purposes not intended by the government. The government disclaims any liability for the use of this information for purposes not intended by the government.

U.S. ARMY CORPS OF ENGINEERS  
PHILADELPHIA DISTRICT  
Surveyed By: \_\_\_\_\_  
Pointed By: E. Anthony  
Checked By: \_\_\_\_\_  
Approved: \_\_\_\_\_  
Chief, Survey Section

INLAND WATERWAY  
ROOSEVELT INLET TO SAVANNAH ROAD BRIDGE  
LEWES AND REHOBOTH CANAL, DELAWARE

E-LR-06





HORIZONTAL REFERENCE - NAD 83, DELAWARE STATE PLANE, ZONE 0700, U.S. FOOT.

VERTICAL REFERENCE - MEAN LOWER LOW WATER, WHICH IS 2.63' BELOW N.A.V.D. 88.

GEOD 12B AND NOAA TIDAL EPOCH: 1983 - 2001 WERE USED. SOUNDINGS ARE EXPRESSED IN FEET AND TENTHS AND REFER TO MEAN LOWER LOW WATER.

SOUNDINGS WERE SELECTED FOR PLOTTING PURPOSES ONLY, USING THE MINIMUM DEPTH WITHIN A 30'X30' CELL SHIFTED TO THE CELL CENTER.

CONTOURS DEPICT ACTUAL LOCATION OF BATHYMETRY AND DO NOT NECESSARILY REFLECT PLOTTED SOUNDING LOCATIONS.

CONTOURS WERE GENERATED USING THE MINIMUM DEPTH WITHIN A 3'X3' CELL.

THE INFORMATION DEPICTED ON THIS MAP REPRESENT THE RESULTS OF SURVEYS MADE ON THE DATES INDICATED AND CAN ONLY BE CONSIDERED AS INDICATING THE GENERAL CONDITIONS EXISTING AT THAT TIME.

THE POSITIONS OF THE AIDS TO NAVIGATION ARE PROVIDED FOR INFORMATION ONLY, AND SHOULD NOT BE USED FOR NAVIGATION.

THE LIMITS OF THE FEDERAL CHANNEL DEPICT THE MOST CURRENT CHANNEL FRAMEWORK AVAILABLE WHICH CAN ALSO BE DOWNLOADED HERE:

<http://navigation.usace.army.mil/Survey/Framework>

BASE MAPPING LINEWORK OR ORTHOPHOTOGRAPHY HAS BEEN COMPILED FROM A VARIETY OF SOURCES AND DATES AND IS INTENDED TO PORTRAY GENERAL CHARACTERISTICS OF THE SHORELINE AND OTHER FEATURES. TEMPORAL CHANGES MAY HAVE OCCURRED SINCE THIS DATA SET WAS COLLECTED AND SOME PARTS OF THE DATA MAY NO LONGER BE AN ACCURATE REPRESENTATION OF THE SURFACE CONDITIONS.



- Shoalest Sounding
- 10' Curve of Depth
- CenterLine
- ToeLine
- StationLine



STA. 10+484 to STA. 19+586 -- 27, 28 & 29 FEB 24

The information provided is for informational purposes only. The government does not warrant the accuracy, completeness, or reliability of the information. The government disclaims any liability for the use of this information for any purpose other than that for which it was provided. The government disclaims any liability for the use of this information for any purpose other than that for which it was provided.

U.S. ARMY CORPS OF ENGINEERS  
PHILADELPHIA DISTRICT  
Surveyed By: \_\_\_\_\_  
Checked By: \_\_\_\_\_  
E. Anthony

INLAND WATERWAY  
ROOSEVELT INLET TO SAVANNAH ROAD BRIDGE  
LEWES AND REHOBOTH CANAL, DELAWARE

E-LR-06